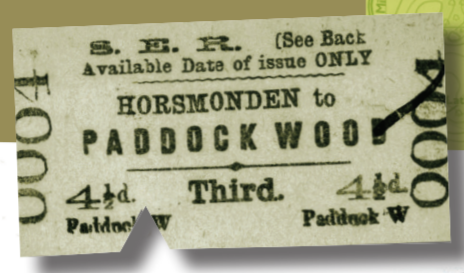
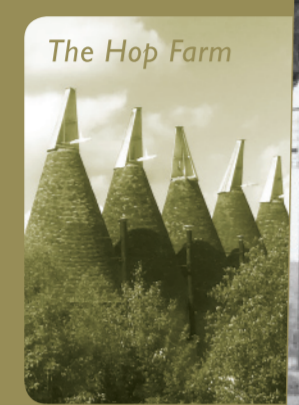


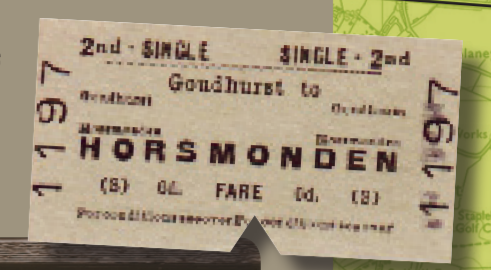
## PADDOCK WOOD

Paddock Wood developed around Maidstone Road Station, opened in 1842 on the railway line between London and Dover. It became the junction for the Maidstone branch in 1844 and in 1892 for the Hawkhurst branch. Today it is a busy commuter town and retail centre with extensive industrial and distribution areas.



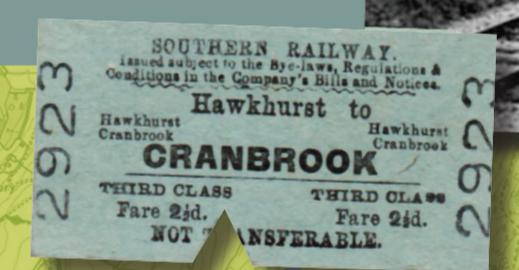
## HORSMONDEN

Horsmonden was an important centre for the medieval iron industry and retains the Furnace Pond and Gun Inn as reminders of its past. Now a centre for agriculture and fruit growing, the village is set around an attractive green which hosts the annual Horse Fair at hop picking time in September.



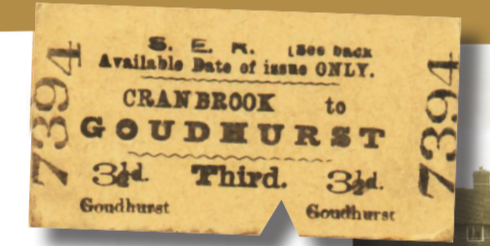
## CRANBROOK

The ancient market town of Cranbrook and the nearby village of Sissinghurst form the nucleus of a vibrant community bounded by woods, forests and rich farmland. The town contains the Union Windmill and St. Dunstan's Church whilst the famous Sissinghurst Castle Gardens are nearby. The former railway station is a mile from the town in the village of Hartley.



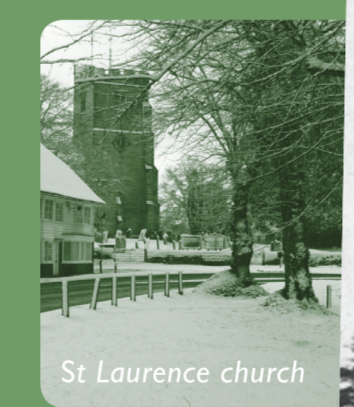
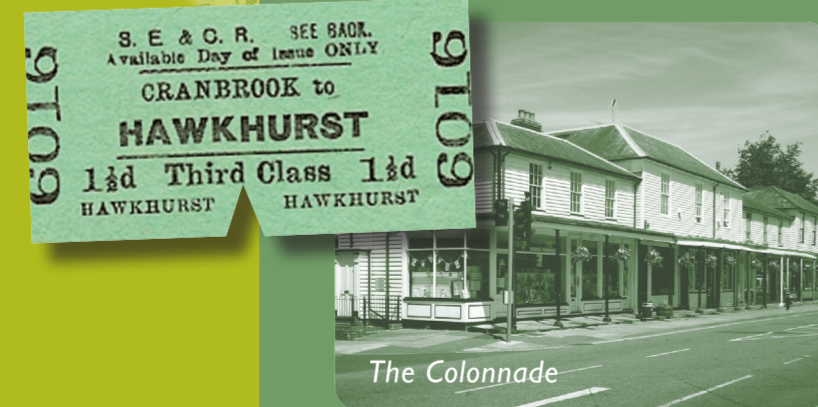
## GOUDHURST

Goudhurst's medieval buildings straggle towards the top of an eccentric hill crowned by a large, ancient church. The village pond offers seating under the shade of an old chestnut tree. The railway once meandered past oast houses and through Wealden woods and fields of hops to reach Goudhurst Station.



## HAWKHURST

From the smuggling activities of the infamous Hawkhurst Gang to the creation of the Oxo Cube and the founding of the Rootes (Motors) Group, Hawkhurst enjoys a rich, varied history. Today, this pretty Wealden village, with St. Laurence Church and its iconic Colonnade, is also home to the UK's first digital cinema.



EXPLORE THE HERITAGE OF THE HOP PICKERS LINE

**KEY**  
The white circles on the map highlight where the privately-owned route of the Hop Pickers Line is crossed by public rights of way.